



CERTIFICATE  
No 1135-24-M-07-2020 A  
OF PRODUCT COMPLIANCE  
WITH REQUIREMENTS OF SAFETY

*It is stated that according to the results of executed tests*

Cots „STAR” 120 x 60 cm, 140 x 70 cm

*produced by*

**PPHU QUERCUS**  
**IMPORT-EKSPORT T. DUDEK**  
**UL. 17 STYCZNIA 107/1 , 64-100 LESZNO,**  
**Zakład we Wschowie**

*meets the following requirements:*

**EN 716-1:2017+AC:2019 Furniture - Children's cots and folding cots for domestic use - Part 1: Safety requirements.**

*Tests conducted according to:*

**EN 716-2:2017 IDT Furniture - Children's cots and folding cots for domestic use - Part 2: Test methods.**

*Tests were executed: 1.07.2020 – 9.07.2020*

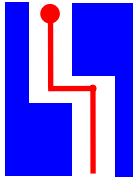
*The Certificate contains test report /3 numbered pages/ which are an integral part of the Certificate.*

**Engineering Centre For Creating  
Product Quality „ATEST” Ltd  
str. Bogusławskiego 16, 60-214 Poznań  
Laboratory in Gruszczyń / Poznań  
ul. Leśna 16 62-006 Kobylnica**

Signed for and on behalf  
“ATEST” Ltd”  
**DIRECTOR**

Poznań,

**FINAL DRAFT**



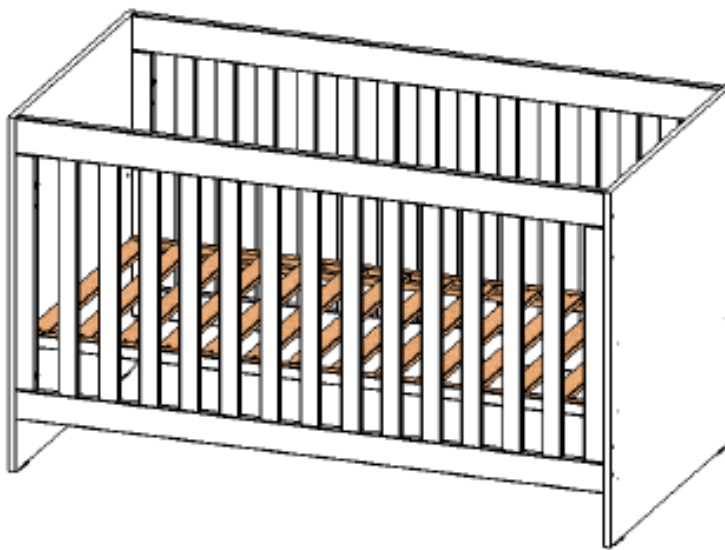
ENGINEERING CENTRE FOR CREATING  
PRODUCT QUALITY  
„ATEST” Ltd

FINAL DRAFT

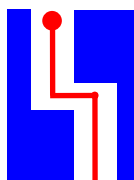
Test report number 1135-24-M-07-2020

Page 1

Article tested: STAR cots 120 x 60 cm manufactured according to technical specification of 14.05.2020 and 19.05.2020 and 140 x 70 cm manufactured according to technical specification of 15.05, 14.05 and 16.06



FINAL DRAFT



ENGINEERING CENTRE FOR CREATING  
PRODUCT QUALITY

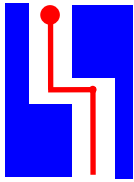
„ATEST” Ltd

FINAL DRAFT

Test report number 1135-24-M-07-2020 A

Page 2

EN 716-2:2017 IDT Furniture - Children's cots and folding cots for domestic use - Part 2: Test methods.			EN 716-1:2+AC:2019 Furniture - Children's cots and folding cots for domestic use - Part 1: Safety requirements.	
Point of standard		Procedure	point of standard	Test result
5.1	Assembly and inspection	organoleptic		<i>pass – the cot was assembled in accordance with the manufacturer instruction, prior to the test and after testing edges free of burrs and sharp edges, after testing, functions of the cot are not impaired, the sizes of the openings not have changed so they present a safety hazard</i>
5.2	Stability test /initial/	test mass 10 kg, horizontal force 30 N	4.3	<i>pass – the cot did not overturn</i>
5.3	Footholds	measurement	4.4.8.2	<i>pass – distance between the top of any foothold an the top of the cot side and end &gt; 500 mm (680 mm), with the cot base in the highest position, the distance between the upper side of the cot base and upper edge of the cot side and end &gt; 200 mm(360 mm)</i>
-	Edges and protruding parts	organoleptic	4.4.1.1	<i>rounded or chamfered</i>
-	Self-tapping screws		4.4.1.2	<i>do not occur</i>
-	Labels and decals		4.4.1.3	<i>pass</i>
5.5	Small parts		4.4.1.4	<i>pass</i>
-	Castors and wheels		4.4.1.5	<i>not applicable tested cot.</i>
5.4	Measurements	measurement measuring probes	4.4.2.1	<i>pass;</i>
			4.4.2.2	<i>accessible gaps and openings &gt; 45 mm and &lt; 65 mm; &lt;7 mm; &gt;12 and &lt;25 mm</i>
			4.4.2.3	<i>accessible holes diameter &lt; 7 mm</i>
			4.4.2.5	<i>distance between cot base and sides and ends &lt; 25 mm</i>
			4.4.2.5	<i>distance between slats of the cot base &lt;60 mm</i>
-	Shear and squeeze points	measurement	4.4.4.3	<i>pass</i>
-	Adjustable cot base	organoleptic/ measurement	4.4.7.2	<i>pass, adjustment with use of a tools..</i>
5.7	Tests for cot base and mattress base	impact points: a, b, c, d, e bottom impactor with a total mass of 10 kg, 150 mm, 1000 times	4.4.7.3	<i>pass – no damages were observed, the function of the cot did not impair</i>
5.8	Strength of sides end ends			
5.8.1	Static load test of side slats /bending test/	horizontal force 250 N, 30 s	4.4.8.3	<i>pass – no damages were observed, the function of the cot did not impair</i>
5.8.2	Strength of sides or side slats /impact test/	Side impactor with a total mass of 2 kg 90 °, 10 times/point	4.4.8.3	<i>pass – no damages were observed, the function of the cot did not impair</i>
5.8.3	Strength of corners /impact test/	Side impactor with a total mass of 2 kg 60 °, 2 x 5 times/point	4.4.8.3	<i>pass – no damages were observed, the function of the cot did not impair</i>



ENGINEERING CENTRE FOR CREATING  
PRODUCT QUALITY  
„ATEST” Ltd

FINAL DRAFT

Test report number 1135-24-M-07-2020

Page 3

EN 716-2:2017 IDT Furniture - Children's cots and folding cots for domestic use - Part 2: Test methods.		EN 716-1:2017+AC:2019 Furniture - Children's cots and folding cots for domestic use - Part 1: Safety requirements.	
Point of standard	Procedure	Point of standard	Test result
5.9	Strength of frame and fastenings		
5.9.1	Vertical static load test	vertical downwards force 300 N, 10 times	4.4.8.4 <i>pass – no damages were observed, the function of the cot did not impair</i>
		measurement	4.4.8.2 <i>the distance between the upper side of the cot base and the upper edge of the cot side and end &gt; 500 mm</i>
5.9.2	Durability test	mass 20 kg horizontal forces 100 N order A-B, C-D 2000 cycles	4.4.8.4 <i>pass – no damages were observed, the function of the cot did not impair</i>
5.10	Snag points	test chain and mass	4.4.5 <i>pass – the loop of the test chain did not get caught under load of the spherical weight</i>
5.12	Stability test /final/	test mass 10 kg, horizontal force 30 N	4.5 <i>pass – the cot did not overturn</i>



CERTIFICATE  
No 1135-24-M-07-2020 A  
OF PRODUCT COMPLIANCE  
WITH REQUIREMENTS OF SAFETY

*It is stated that according to the results of executed tests*

**Cots „STAR” 120 x 60 cm, 140 x 70 cm**

*distributed by*

**HAPPY BABY  
BV EDVH  
Beelbroekstraat 124  
9040 Sint-Amandsberg**

*meets the following requirements:*

**EN 716-1:2017+AC:2019 Furniture - Children's cots and folding cots for domestic use - Part 1: Safety requirements.**

*Tests conducted according to:*

**EN 716-2:2017 IDT Furniture - Children's cots and folding cots for domestic use - Part 2: Test methods.**

*Tests were executed: 1.07.2020 – 9.07.2020*

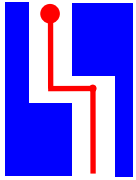
*The Certificate contains test report /3 numbered pages/ which are an integral part of the Certificate.*

**Engineering Centre For Creating  
Product Quality „ATEST” Ltd  
str. Bogusławskiego 16, 60-214 Poznań  
Laboratory in Gruszczyń / Poznań  
ul. Leśna 16 62-006 Kobylnica**

Signed for and on behalf  
“ATEST” Ltd  
**DIRECTOR**

Poznań,

**FINAL DRAFT**



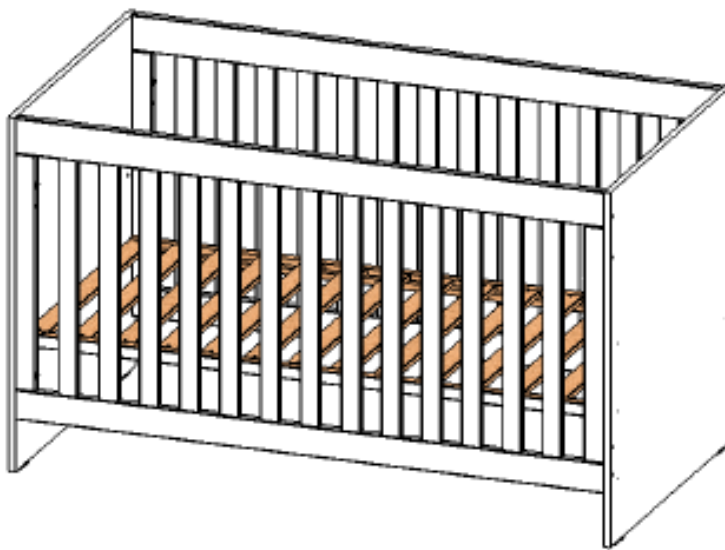
ENGINEERING CENTRE FOR CREATING  
PRODUCT QUALITY  
„ATEST” Ltd

FINAL DRAFT

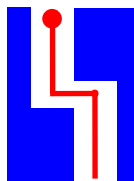
Test report number 1135-24-M-07-2020

Page 1

Article tested: STAR cots 120 x 60 cm manufactured according to technical specification of 14.05.2020 and 19.05.2020 and 140 x 70 cm manufactured according to technical specification of 15.05, 14.05 and 16.06



FINAL DRAFT



ENGINEERING CENTRE FOR CREATING  
PRODUCT QUALITY

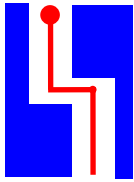
„ATEST” Ltd

FINAL DRAFT

Test report number 1135-24-M-07-2020

Page 2

EN 716-2:2017 IDT Furniture - Children's cots and folding cots for domestic use - Part 2: Test methods.			EN 716-1:2+AC:2019 Furniture - Children's cots and folding cots for domestic use - Part 1: Safety requirements.	
Point of standard		Procedure	point of standard	Test result
5.1	Assembly and inspection	organoleptic		<i>pass – the cot was assembled in accordance with the manufacturer instruction, prior to the test and after testing edges free of burrs and sharp edges, after testing, functions of the cot are not impaired, the sizes of the openings not have changed so they present a safety hazard</i>
5.2	Stability test /initial/	test mass 10 kg, horizontal force 30 N	4.3	<i>pass – the cot did not overturn</i>
5.3	Footholds	measurement	4.4.8.2	<i>pass – distance between the top of any foothold an the top of the cot side and end &gt; 500 mm (680 mm), with the cot base in the highest position, the distance between the upper side of the cot base and upper edge of the cot side and end &gt; 200 mm(360 mm)</i>
-	Edges and protruding parts	organoleptic	4.4.1.1	<i>rounded or chamfered</i>
-	Self-tapping screws		4.4.1.2	<i>do not occur</i>
-	Labels and decals		4.4.1.3	<i>pass</i>
5.5	Small parts		4.4.1.4	<i>pass</i>
-	Castors and wheels		4.4.1.5	<i>not applicable tested cot.</i>
5.4	Measurements	measurement measuring probes	4.4.2.1	<i>pass;</i>
			4.4.2.2	<i>accessible gaps and openings &gt; 45 mm and &lt; 65 mm; &lt;7 mm; &gt;12 and &lt;25 mm</i>
			4.4.2.3	<i>accessible holes diameter &lt; 7 mm</i>
			4.4.2.5	<i>distance between cot base and sides and ends &lt; 25 mm</i>
			4.4.2.5	<i>distance between slats of the cot base &lt;60 mm</i>
-	Shear and squeeze points	measurement	4.4.4.3	<i>pass</i>
-	Adjustable cot base	organoleptic/ measurement	4.4.7.2	<i>pass, adjustment with use of a tools..</i>
5.7	Tests for cot base and mattress base	impact points: a, b, c, d, e bottom impactor with a total mass of 10 kg, 150 mm, 1000 times	4.4.7.3	<i>pass – no damages were observed, the function of the cot did not impair</i>
5.8	Strength of sides end ends			
5.8.1	Static load test of side slats /bending test/	horizontal force 250 N, 30 s	4.4.8.3	<i>pass – no damages were observed, the function of the cot did not impair</i>
5.8.2	Strength of sides or side slats /impact test/	Side impactor with a total mass of 2 kg 90 °, 10 times/point	4.4.8.3	<i>pass – no damages were observed, the function of the cot did not impair</i>
5.8.3	Strength of corners /impact test/	Side impactor with a total mass of 2 kg 60 °, 2 x 5 times/point	4.4.8.3	<i>pass – no damages were observed, the function of the cot did not impair</i>



ENGINEERING CENTRE FOR CREATING  
PRODUCT QUALITY  
„ATEST” Ltd

FINAL DRAFT

Test report number 1135-24-M-07-2020

Page 3

EN 716-2:2017 IDT Furniture - Children's cots and folding cots for domestic use - Part 2: Test methods.		EN 716-1:2017+AC:2019 Furniture - Children's cots and folding cots for domestic use - Part 1: Safety requirements.	
Point of standard	Procedure	Point of standard	Test result
5.9	Strength of frame and fastenings		
5.9.1	Vertical static load test	vertical downwards force 300 N, 10 times	4.4.8.4 <i>pass – no damages were observed, the function of the cot did not impair</i>
		measurement	4.4.8.2 <i>the distance between the upper side of the cot base and the upper edge of the cot side and end &gt; 500 mm</i>
5.9.2	Durability test	mass 20 kg horizontal forces 100 N order A-B, C-D 2000 cycles	4.4.8.4 <i>pass – no damages were observed, the function of the cot did not impair</i>
5.10	Snag points	test chain and mass	4.4.5 <i>pass – the loop of the test chain did not get caught under load of the spherical weight</i>
5.12	Stability test /final/	test mass 10 kg, horizontal force 30 N	4.5 <i>pass – the cot did not overturn</i>