



CERTIFICATE
No 1134-23-M-07-2020 A
OF PRODUCT COMPLIANCE
WITH REQUIREMENTS OF SAFETY

It is stated that according to the results of executed tests

Cots „JOERI” 60x120 cm, 70x 140 cm

produced by

PPHU QUERCUS
IMPORT-EKSPORT T. DUDEK
UL. 17 STYCZNIA 107/1 , 64-100 LESZNO,
Zakład we Wschowie

meets the following requirements:

EN 716-1:2017+AC:2019 Furniture - Children's cots and folding cots for domestic use - Part 1: Safety requirements.

Tests conducted according to:

EN 716-2:2017 IDT Furniture - Children's cots and folding cots for domestic use - Part 2: Test methods.

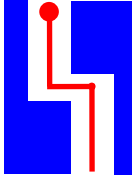
Tests were executed: 1.07.2020 – 9.07.2020

The Certificate contains test report /3 numbered pages/ which are an integral part of the Certificate.

**Engineering Centre For Creating
Product Quality „ATEST” Ltd
str. Bogusławskiego 16, 60-214 Poznań
Laboratory in Gruszczyń / Poznań
ul. Leśna 16 62-006 Kobylnica**

Signed for and on behalf
“ATEST” Ltd
DIRECTOR

Poznań,



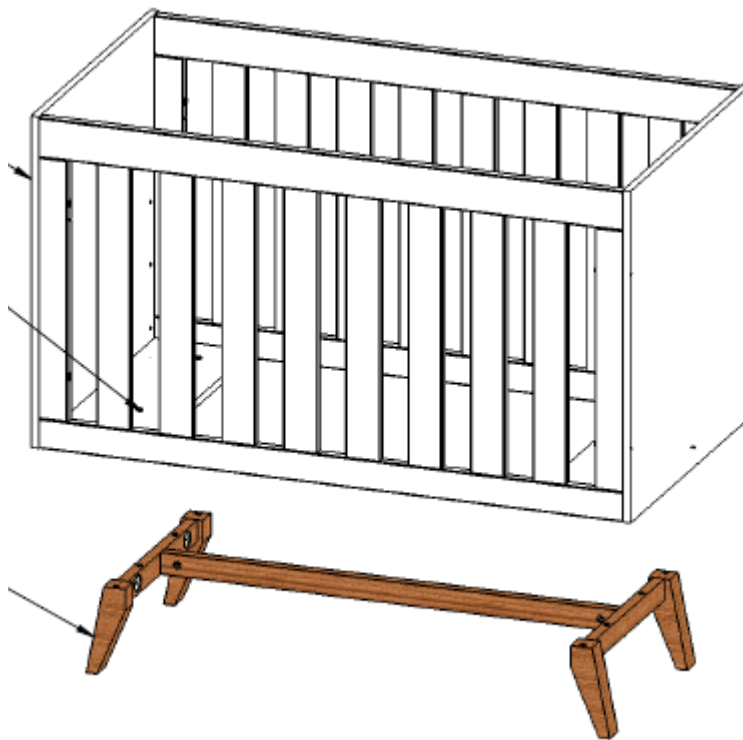
ENGINEERING CENTRE FOR CREATING
PRODUCT QUALITY
„ATEST” Ltd

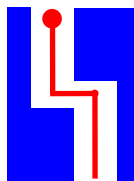
FINAL VERSION

Test report number 1134-23-M-07-2020

Page 1

Article tested: JOERI cots 120 x 60 cm/ 140 x 70 cm manufactured according to technical specification of 1.06.2020, 3.06.2020, 9.06.2020 i 16.06.2020





ENGINEERING CENTRE FOR CREATING
PRODUCT QUALITY

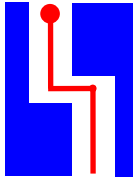
„ATEST” Ltd

FINAL VERSION

Test report number 1134-23-M-07-2020 A

Page 2

EN 716-2:2017 IDT Furniture - Children's cots and folding cots for domestic use - Part 2: Test methods.		EN 716-1:2+AC:2019 Furniture - Children's cots and folding cots for domestic use - Part 1: Safety requirements.	
Point of standard	Procedure	point of standard	Test result
5.1	Assembly and inspection	organoleptic	<i>pass – the cot was assembled in accordance with the manufacturer instruction, prior to the test and after testing edges free of burrs and sharp edges, after testing, functions of the cot are not impaired, the sizes of the openings not have changed so they present a safety hazard</i>
5.2	Stability test /initial/	test mass 10 kg, horizontal force 30 N	4.3 <i>pass – the cot did not overturn</i>
5.3	Footholds	measurement	4.4.8.2 <i>pass – distance between the top of any foothold an the top of the cot side and end > 500 mm (615mm), with the cot base in the highest position, the distance between the upper side of the cot base and upper edge of the cot side and end > 200 mm(364 mm)</i>
-	Edges and protruding parts	organoleptic	4.4.1.1 <i>rounded or chamfered</i>
-	Self-tapping screws		4.4.1.2 <i>do not occur</i>
-	Labels and decals		4.4.1.3 <i>pass</i>
5.5	Small parts		4.4.1.4 <i>pass</i>
-	Castors and wheels		4.4.1.5 <i>not applicable tested cot.</i>
5.4	Measurements	measurement measuring probes	4.4.2.1 <i>pass;</i> <i>accessible gaps and openings > 45 mm and < 65 mm;<7 mm; >12 and <25 mm</i> 4.4.2.2 <i>accessible holes diameter < 7 mm</i> 4.4.2.3 <i>distance between cot base and sides and ends < 25 mm</i> 4.4.2.5 <i>distance between slats of the cot base <60 mm</i>
-	Shear and squeeze points	measurement	4.4.4.3 <i>pass</i>
-	Adjustable cot base	organoleptic/ measurement	4.4.7.2 <i>pass, adjustment with use of a tools..</i>
5.7	Tests for cot base and mattress base	impact points: a, b, c, d, e bottom impactor with a total mass of 10 kg, 150 mm, 1000 times	4.4.7.3 <i>pass – no damages were observed, the function of the cot did not impair</i>
5.8	Strength of sides end ends		
5.8.1	Static load test of side slats /bending test/	horizontal force 250 N, 30 s	4.4.8.3 <i>pass – no damages were observed, the function of the cot did not impair</i>
5.8.2	Strength of sides or side slats /impact test/	Side impactor with a total mass of 2 kg 90 °, 10 times/point	4.4.8.3 <i>pass – no damages were observed, the function of the cot did not impair</i>
5.8.3	Strength of corners /impact test/	Side impactor with a total mass of 2 kg 60 °, 2 x 5 times/point	4.4.8.3 <i>pass – no damages were observed, the function of the cot did not impair</i>



ENGINEERING CENTRE FOR CREATING
PRODUCT QUALITY
„ATEST” Ltd

FINAL VERSION

Test report number 1134-23-M-07-2020

Page 3

EN 716-2:2017 IDT Furniture - Children's cots and folding cots for domestic use - Part 2: Test methods.		EN 716-1:2017+AC:2019 Furniture - Children's cots and folding cots for domestic use - Part 1: Safety requirements.		
Point of standard		Procedure	Point of standard	Test result
5.9	Strength of frame and fastenings			
5.9.1	Vertical static load test	vertical downwards force 300 N, 10 times	4.4.8.4	<i>pass – no damages were observed, the function of the cot did not impair</i>
		measurement	4.4.8.2	<i>the distance between the upper side of the cot base and the upper edge of the cot side and end > 500 mm</i>
5.9.2	Durability test	mass 20 kg horizontal forces 100 N order A-B, C-D 2000 cycles	4.4.8.4	<i>pass – no damages were observed, the function of the cot did not impair</i>
5.10	Snag points	test chain and mass	4.4.5	<i>pass – the loop of the test chain did not get caught under load of the spherical weight</i>
5.12	Stability test /final/	test mass 10 kg, horizontal force 30 N	4.5	<i>pass – the cot did not overturn</i>



CERTIFICATE
No 1134-23-M-07-2020 A
OF PRODUCT COMPLIANCE
WITH REQUIREMENTS OF SAFETY

It is stated that according to the results of executed tests

Cots „JOERI” 60x120 cm, 70x 140 cm

distributed by

**HAPPY BABY
BV EDVH
Beelbroekstraat 124
9040 Sint-Amandsberg**

meets the following requirements:

EN 716-1:2017+AC:2019 Furniture - Children's cots and folding cots for domestic use - Part 1: Safety requirements.

Tests conducted according to:

EN 716-2:2017 IDT Furniture - Children's cots and folding cots for domestic use - Part 2: Test methods.

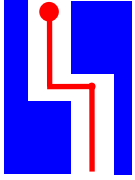
Tests were executed: 1.07.2020 – 9.07.2020

The Certificate contains test report /3 numbered pages/ which are an integral part of the Certificate.

**Engineering Centre For Creating
Product Quality „ATEST” Ltd
str. Bogusławskiego 16, 60-214 Poznań
Laboratory in Gruszczyń / Poznań
ul. Leśna 16 62-006 Kobylnica**

Signed for and on behalf
“ATEST” Ltd”
DIRECTOR

Poznań,



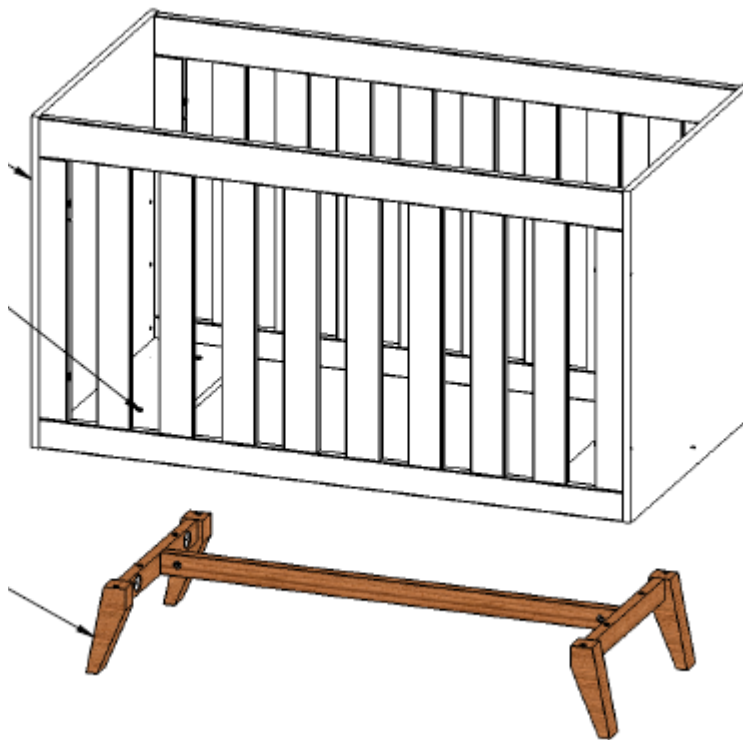
ENGINEERING CENTRE FOR CREATING
PRODUCT QUALITY
„ATEST” Ltd

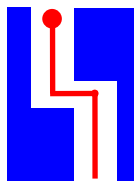
FINAL VERSION

Test report number 1134-23-M-07-2020

Page 1

Article tested: JOERI cots 120 x 60 cm/ 140 x 70 cm manufactured according to technical specification of 1.06.2020, 3.06.2020, 9.06.2020 i 16.06.2020





ENGINEERING CENTRE FOR CREATING
PRODUCT QUALITY

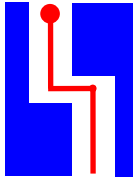
„ATEST” Ltd

FINAL VERSION

Test report number 1134-23-M-07-2020 A

Page 2

EN 716-2:2017 IDT Furniture - Children's cots and folding cots for domestic use - Part 2: Test methods.		EN 716-1:2+AC:2019 Furniture - Children's cots and folding cots for domestic use - Part 1: Safety requirements.		
Point of standard		Procedure	point of standard	Test result
5.1	Assembly and inspection	organoleptic		<i>pass – the cot was assembled in accordance with the manufacturer instruction, prior to the test and after testing edges free of burrs and sharp edges, after testing, functions of the cot are not impaired, the sizes of the openings not have changed so they present a safety hazard</i>
5.2	Stability test /initial/	test mass 10 kg, horizontal force 30 N	4.3	<i>pass – the cot did not overturn</i>
5.3	Footholds	measurement	4.4.8.2	<i>pass – distance between the top of any foothold an the top of the cot side and end > 500 mm (615mm), with the cot base in the highest position, the distance between the upper side of the cot base and upper edge of the cot side and end > 200 mm(364 mm)</i>
-	Edges and protruding parts	organoleptic	4.4.1.1	<i>rounded or chamfered</i>
-	Self-tapping screws		4.4.1.2	<i>do not occur</i>
-	Labels and decals		4.4.1.3	<i>pass</i>
5.5	Small parts		4.4.1.4	<i>pass</i>
-	Castors and wheels		4.4.1.5	<i>not applicable tested cot.</i>
5.4	Measurements	measurement measuring probes	4.4.2.1	<i>pass;</i>
			4.4.2.2	<i>accessible gaps and openings > 45 mm and < 65 mm;<7 mm; >12 and <25 mm</i>
			4.4.2.3	<i>accessible holes diameter < 7 mm</i>
			4.4.2.5	<i>distance between cot base and sides and ends < 25 mm</i>
			4.4.2.5	<i>distance between slats of the cot base <60 mm</i>
-	Shear and squeeze points	measurement	4.4.4.3	<i>pass</i>
-	Adjustable cot base	organoleptic/ measurement	4.4.7.2	<i>pass, adjustment with use of a tools..</i>
5.7	Tests for cot base and mattress base	impact points: a, b, c, d, e bottom impactor with a total mass of 10 kg, 150 mm, 1000 times	4.4.7.3	<i>pass – no damages were observed, the function of the cot did not impair</i>
5.8	Strength of sides end ends			
5.8.1	Static load test of side slats /bending test/	horizontal force 250 N, 30 s	4.4.8.3	<i>pass – no damages were observed, the function of the cot did not impair</i>
5.8.2	Strength of sides or side slats /impact test/	Side impactor with a total mass of 2 kg 90 °, 10 times/point	4.4.8.3	<i>pass – no damages were observed, the function of the cot did not impair</i>
5.8.3	Strength of corners /impact test/	Side impactor with a total mass of 2 kg 60 °, 2 x 5 times/point	4.4.8.3	<i>pass – no damages were observed, the function of the cot did not impair</i>



ENGINEERING CENTRE FOR CREATING
PRODUCT QUALITY
„ATEST” Ltd

FINAL VERSION

Test report number 1134-23-M-07-2020

Page 3

EN 716-2:2017 IDT Furniture - Children's cots and folding cots for domestic use - Part 2: Test methods.		EN 716-1:2017+AC:2019 Furniture - Children's cots and folding cots for domestic use - Part 1: Safety requirements.		
Point of standard		Procedure	Point of standard	Test result
5.9	Strength of frame and fastenings			
5.9.1	Vertical static load test	vertical downwards force 300 N, 10 times	4.4.8.4	<i>pass – no damages were observed, the function of the cot did not impair</i>
		measurement	4.4.8.2	<i>the distance between the upper side of the cot base and the upper edge of the cot side and end > 500 mm</i>
5.9.2	Durability test	mass 20 kg horizontal forces 100 N order A-B, C-D 2000 cycles	4.4.8.4	<i>pass – no damages were observed, the function of the cot did not impair</i>
5.10	Snag points	test chain and mass	4.4.5	<i>pass – the loop of the test chain did not get caught under load of the spherical weight</i>
5.12	Stability test /final/	test mass 10 kg, horizontal force 30 N	4.5	<i>pass – the cot did not overturn</i>